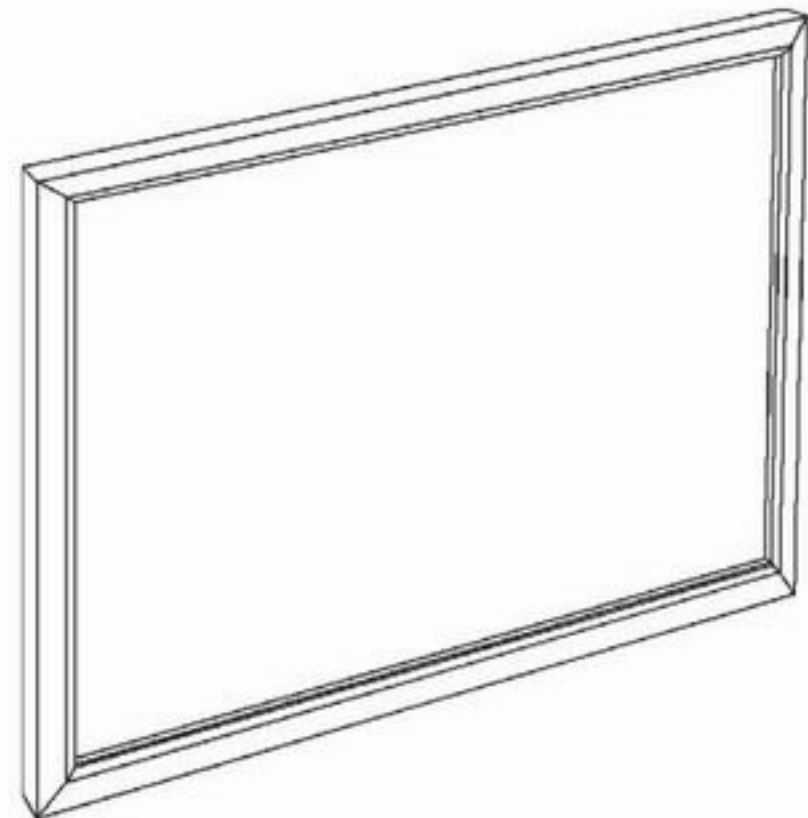


Fixed Film Screen



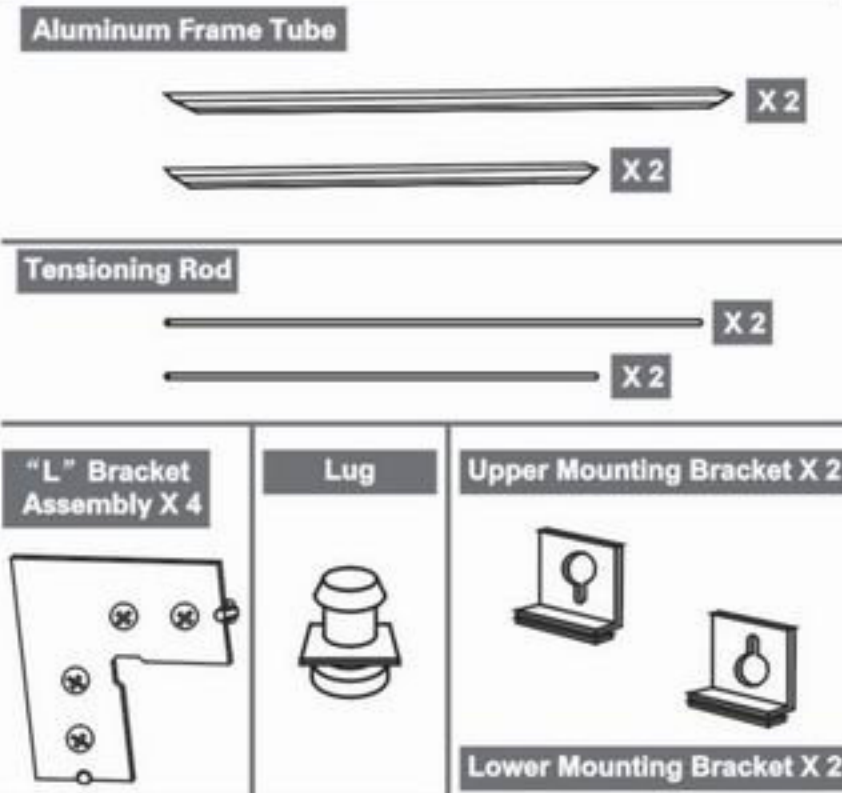
Installation Guide

Please follow the assembly and installation instructions carefully. With proper assembly and installation, your new screen will deliver years of trouble-free service

Preparing your Screen for Installation

- Carefully open the package and lay out all the parts on a clean, flat surface.
- Use extreme caution when unpacking the screen; do not use knives or sharp objects to open the packing boxes.
- Do not unpack the screen material at this time

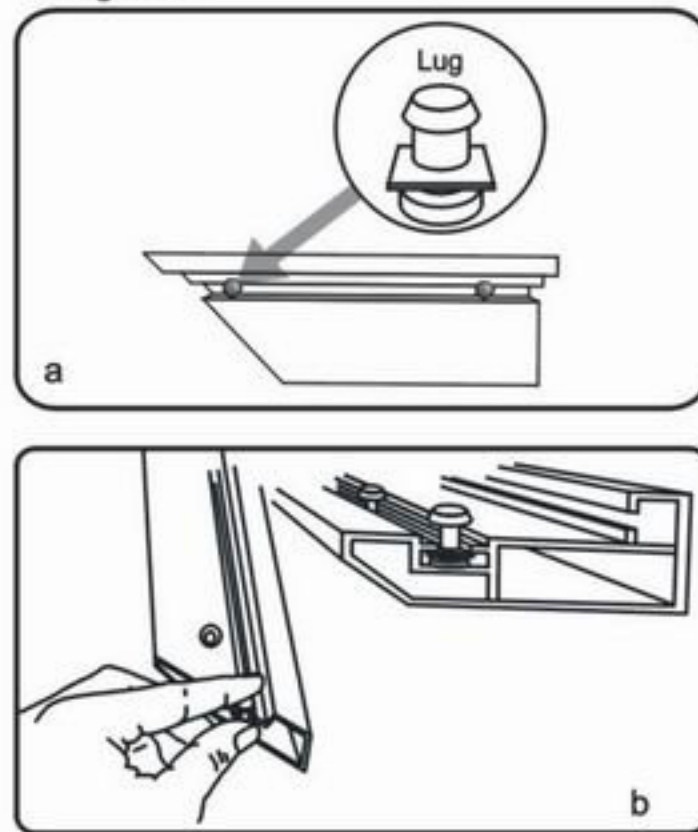
Part List



Installing the lugs

- Slide the lugs into the section of the extruded aluminum frame as shown in Diagram 1.

Diagram 1

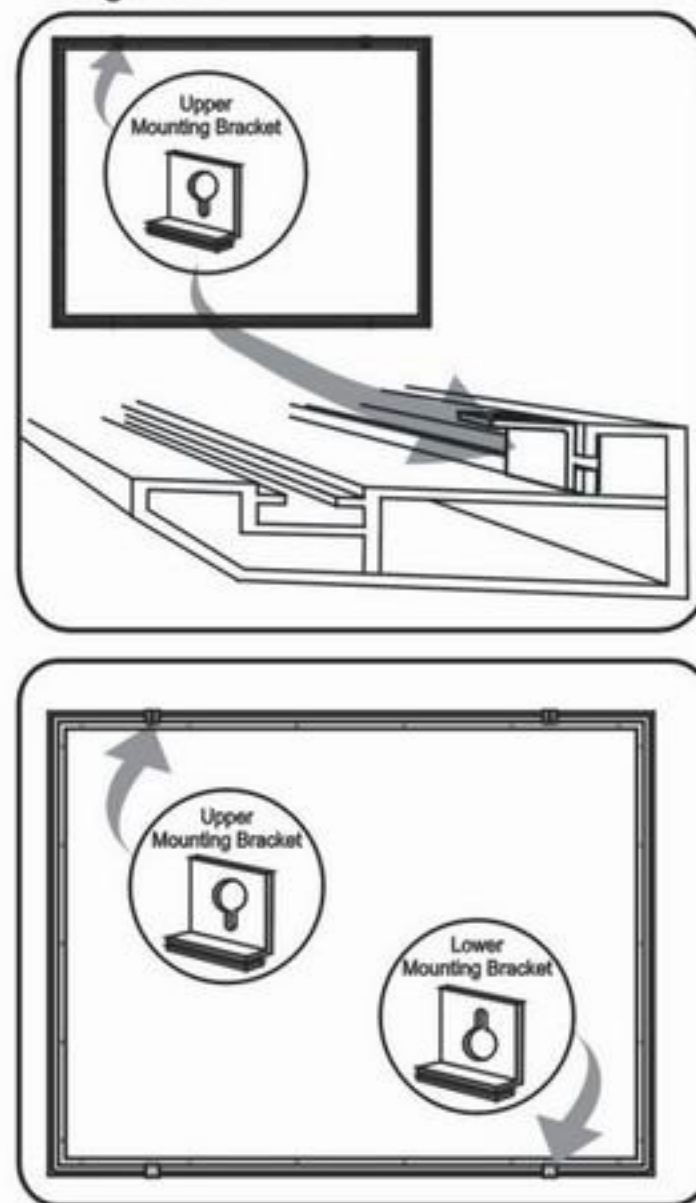


- The snap lugs line up with the arrow decals on the frame tubes. Alignment is not critical at this stage of the installation. Note that the screen is supplied with 2 extra snap lugs; should you lose or break a snap lug, one of the spares is a convenient replacement.

Installing the mounting brackets.

- There are two (2) mounting brackets that also slide into the aluminum frame channel as shown in diagram 2. These are for mounting the screen to the wall. Both of the mounting brackets should go on the same frame tube. As with the snap lugs, exact position is not critical at this stage.

Diagram 2

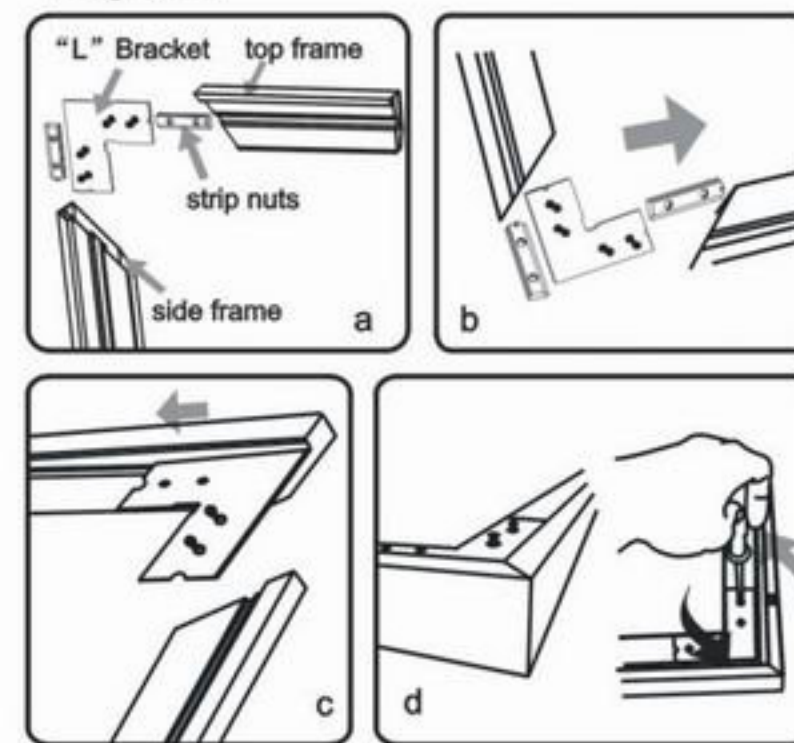


Assembling the frame

- Place all of the frame tubes face down on the work surface and carefully line up the ends to form the basic shape of the finished screen.
- The 4 supplied "L" shaped corner bracket assemblies are used to join the individual frame tubes together.
- Loosen the 4 screws on the "L" brackets about 2 full turns. Next, carefully slip the bracket into the aluminum frame channel as shown in diagram 3.
- It will help to leave the screws loose until you get all of the brackets in place.

- Carefully line up the frame corners and tighten the screws slightly; repeat this step at each corner.
- Note that you may have to loosen and adjust the brackets and frame tubes in order to get the frame perfectly square. A carpenter's square is very helpful with this stage of the assembly if you have one handy.

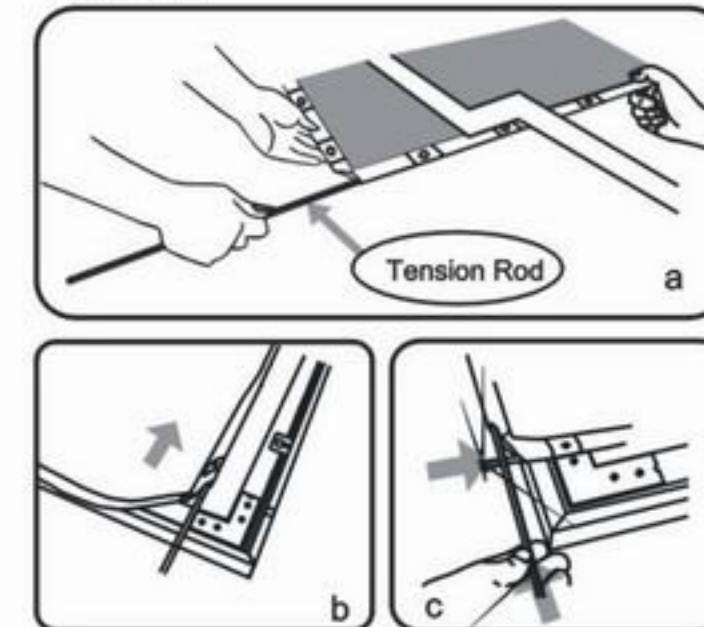
Diagram 3



Installing the screen material

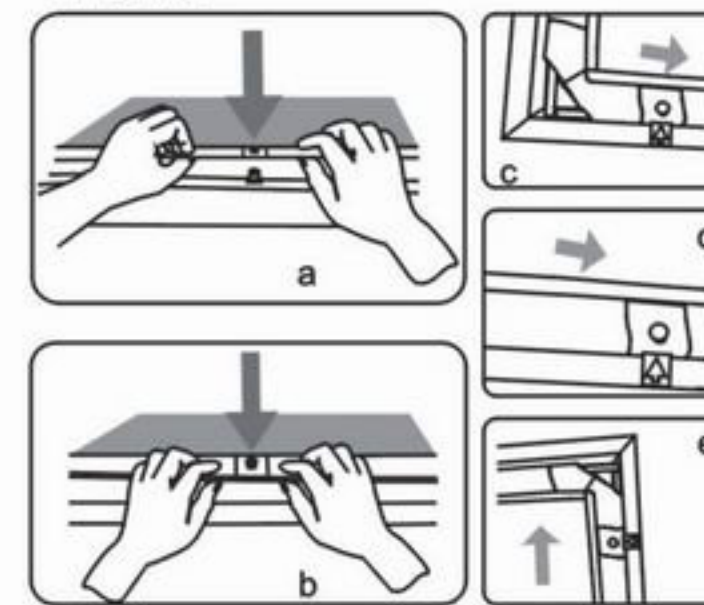
- It is a good idea to make sure that your hands and work area are clean before you begin working with the screen material.
- Carefully unpack the screen material- Use caution as the 4 tensioning rods are contained inside the cardboard tube.
- Carefully lay out the screen material so that it roughly lines up with the frame- Exact position is not critical at this stage of the assembly. It is important that the screen material is facing the correct direction. It is easy to identify the back side of the screen as it will have the stitched or welded seam visible.
- Unpack the 4 metal tensioning rods.
- Carefully insert the long metal tensioning rods into the longer edges of the screen material; one rod per side. It is easier if the screen is flat on the floor; use care when installing the rods; do not force it or damage to the screen material may occur. (See diagram 4)
- Now insert the shorter tensioning rods into the corresponding sides of the screen; as with the longer rods, use caution to avoid damage to the screen. (See diagram 4)

Diagram 4



- Line up the lugs and the screen material with the frame and press the lug through the corresponding hole in the material. Some adjustment and re-adjustment is often necessary; this is normal. Note that the tensioning rod goes to the outside of the snap lug. (See diagram 5)

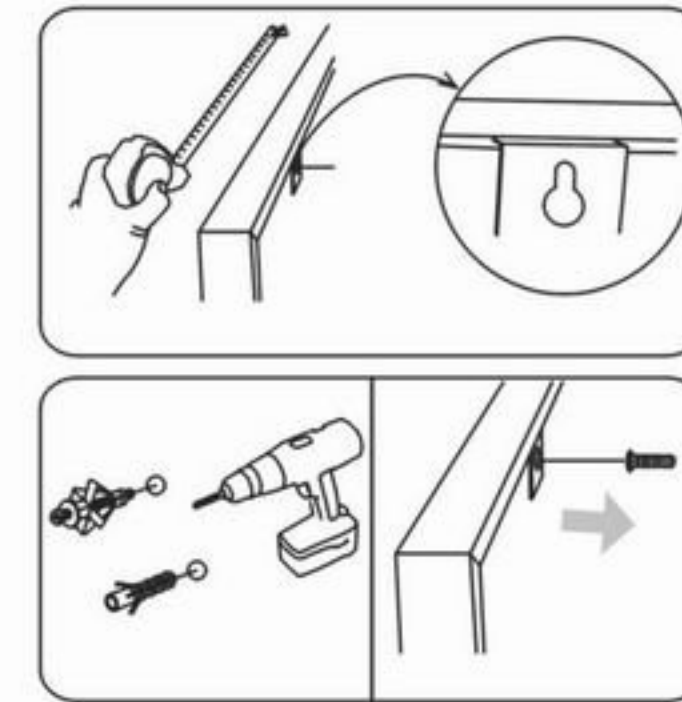
Diagram 5



- Repeat this process all the way around the frame. As you position the tensioning rod behind the lugs, you will notice the screen becoming tighter on the frame and any wrinkles or creases will disappear.
- Once the screen is in place and the tensioning rods are seated behind all of the lugs, take a moment to inspect the front of the screen. Make sure that the screen material is flat and wrinkle-free. Also, check the corners to make sure that the screen is properly positioned. If you note any wrinkles or positioning issues, simply lay the screen face down and adjust accordingly.
- **Note that some very small fold lines or wrinkles may exist for a few hours; this is due to the packing of the screen and they will disappear within a short time.**

Mounting the screen onto the wall

- Select an appropriate area to mount the screen. Make sure the position selected will not interfere with existing features of your room; wall sockets, switches etc... these all should be avoided.
- DO NOT install the screen over an electrical outlet or switch. Doing so poses a serious fire hazard.
- For homes with stud-wall construction, use stud finder or carefully measure to determine where the studs are located in the wall. The screen MUST be mounted to the studs - NEVER rely on gypsum board, drywall or thin wall materials to support the weight of the screen!
- Once the studs are located, you should select two mounting points which are far enough apart to provide roughly equal support along the top of the frame. The distance between the mounting screws should be between 48" and 80" depending on the screen size. The minimum is 48".
- Measure to determine the proper height of the mounting screws and drill pilot holes for those screws.



- Install the screws into the pilot holes, leaving the head about .375" (10mm) from the wall surface. Note: The minimum recommended screw size is #8 with a length of at least 2" (50.8mm).
- Visually line up the mounting brackets with the screw heads and carefully position the brackets over the screw heads. You may need to work the screen back and forth a few times to get the screws to seat into the brackets. It is beneficial to attach one bracket first and then the other. Once seated, you should inspect to be sure that the screen is securely mounted on the screws. Adjust if necessary.

Care and cleaning

- Your new screen can be effectively cleaned with a soft cloth using mild soap and water. DO NOT use harsh detergents, chemicals, distilled spirits or petro-chemicals to clean the screen; doing so may result in severe damage to the screen or the frame coating.
- If the felt covering on the frame gets dusty or covered with lint, use a household vacuum cleaner with a brush or furniture cleaning attachment to clean the felt. We do not recommend using a excessive amounts of water on the felt.

