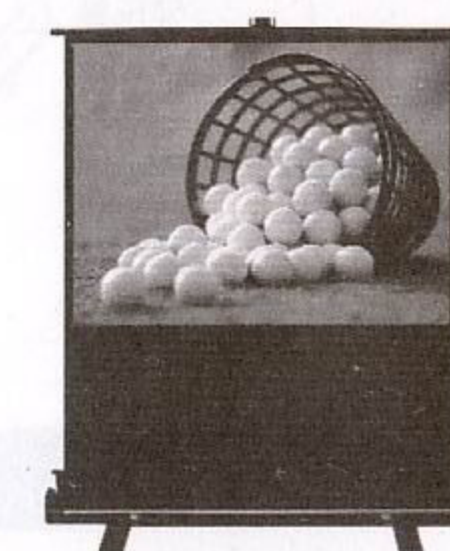
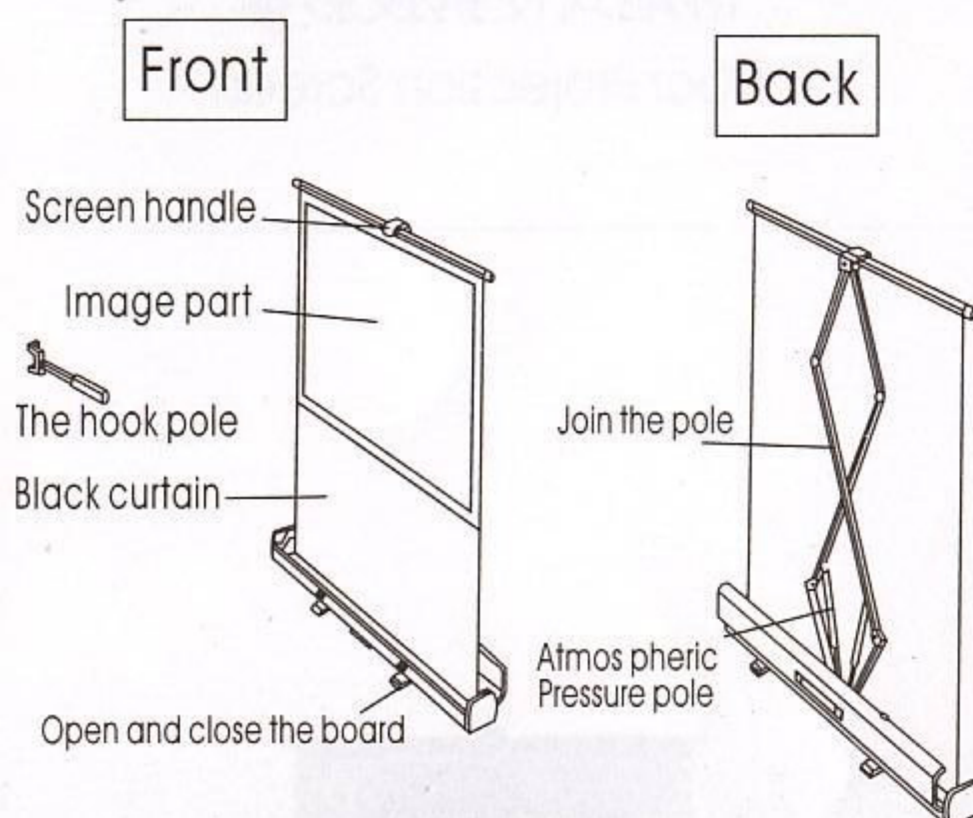


落地式便携投影幕 Floor Projection Screen



OPERATING INSTRUCTIONS FOR SCREEN

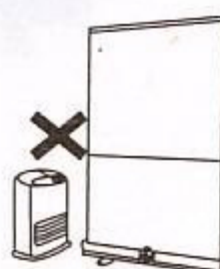
Part name



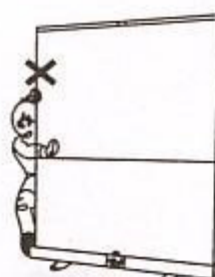
Operate the points for attention

Warn If ignore following content of warning, will cause caseualties probably after operating by mistake.

Don't Put by articles of high temperature.
Putting it in the stove, the gas range waits for the screen by articles of high temperature, when fall down or over heated, May cause the fire,



Don't let children keep in touch with the screen.
If has not grasped operation method, unexpected thing may take place.



Be careful If ignores following content of paying attention toes after operating by mistake. It's could take place that make people injure or damage screen.

1. When not needling, please the level to put screens.
Depend on obliquely setting up -right, the screen has danger of falling down.



2. Please regain the screen in the shell after using.
In order to keep the screen surface clean, after using please regain the screen in the shell.

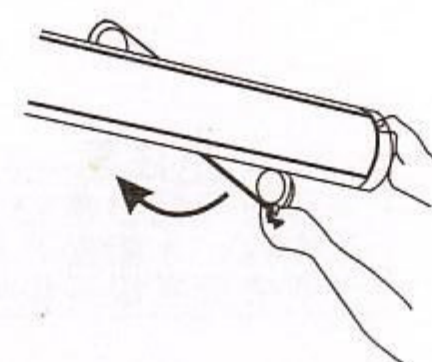
Operation method

1. Install screens

It install place choose competence and calm place.

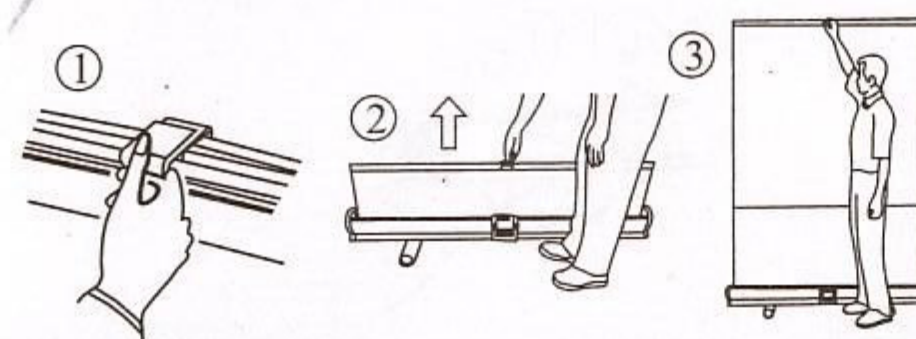
2. Open the foot board

Lift one end of the outer cover slightly.

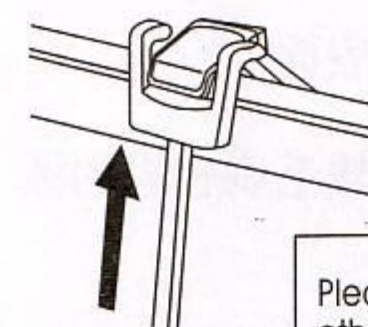
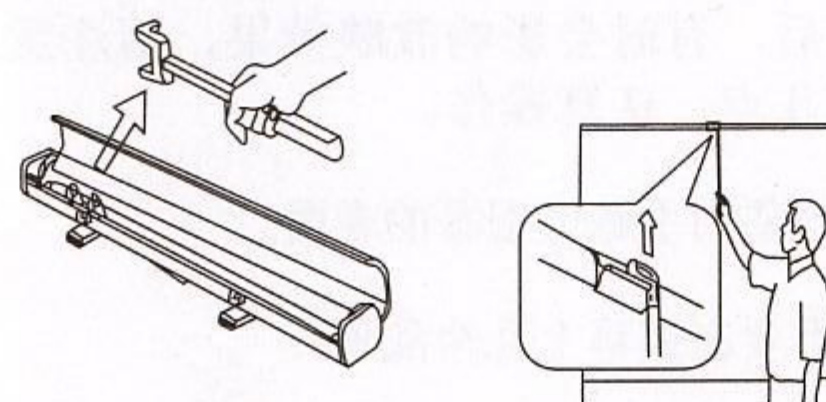


3. Pull out screens

(1) Drawing the handly of the screen, pull to the height needed prependicularly and slowly.



(2) If hands can not be reached, Please be with excellent height that prop up the screen with hook.

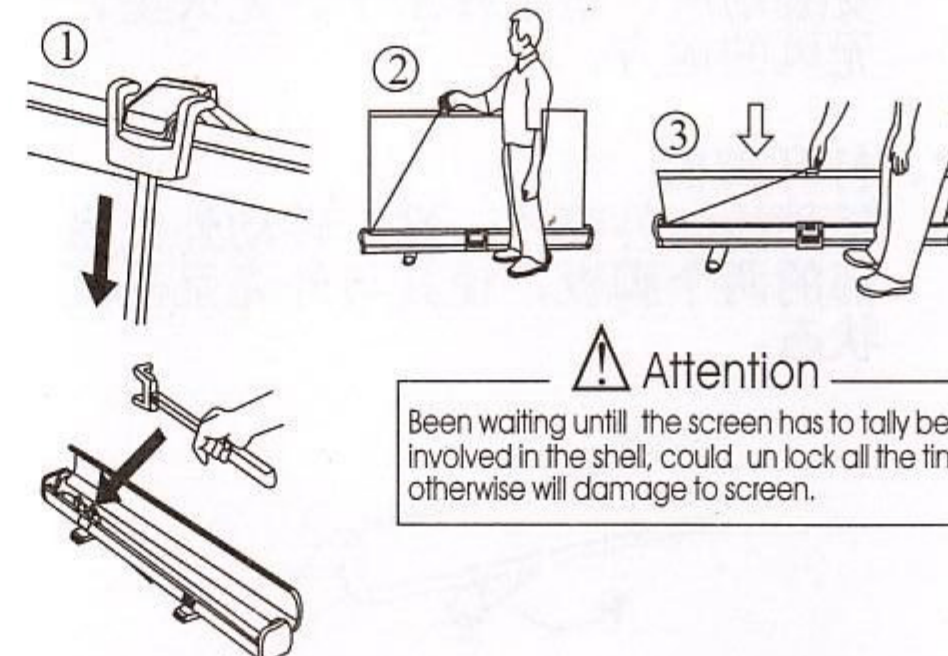


Attention

Please don't draw screens with strength, otherwise will damage screens.

4. Draw down the screens

Draw the screen down excellently with the hook, hands will then, and then catch the handle on screens to put down slowly perpendicularly with hands enough, Been waiting untill the screen has to tally been involved in the shell, could un lock all the time.

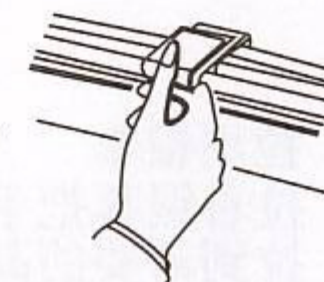


Attention

Been waiting untill the screen has to tally been involved in the shell, could un lock all the time, otherwise will damage to screen.

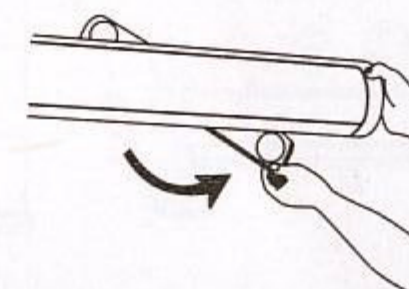
5. Close the board.

Arresting the board to cover, it is firm to buckle the lock.



6. Regain the foot board.

Lift one end of the outer cover slightly, Rotate the foot board, make it and outer cover parallel.



Operate the points for attention

In order to improve the result of use of our product, special processing have been carried on to the screen surface, if the screen surface is made dirty or shave wounded, It will influences the result of use, please pay attention to the following several points, Serious operation.

- Please don't touch the surface of the screen with hands.
- Please don't apply and draw arbitrarily on the screen.
- Please don't shave the screen surface with the hard thing.
- Please use dry soft or soft hairs brush, sa-safrase. Gently shed the dirty of the screen superficial.
- Have greasy dirt is please have been with washing clean and precise while being neutral, after finishing serubing gently, and then dry with the clean cotton cloth, can't use the petrol and thinner.